

BigFix Enterprise Suite



Put an end to the complexity and chaos of security configuration management throughout the enterprise

As information technology systems have grown in size and scope, IT organizations face a growing need to simplify the tools they deploy and to maximize their ROI by combining security, configuration and systems management into a common easy-to-manage solution. They must get more done with fewer resources, lower headcount and less time. All while locked in a never-ending battle to keep up with new security challenges and meet tightened service levels on hundreds of thousands of mobile laptops, desktops and servers spanning large distributed networks.

BigFix delivers the control you need for enterprise security configuration management in one simple, powerful solution

BigFix—a leader in enterprise security configuration management—provides a scalable, flexible, agent-based platform and automation-assisted solutions that enable you to use the distributed power of all your computers to help you manage their security and configuration, no matter where they are or how they connect to your network. BigFix's proven, patented solutions bring an unprecedented level of control, speed, simplicity and security to the otherwise chaotic world of security configuration management.

At the heart of every BigFix solution is the BigFix Enterprise Suite (BES) – an agent-based, real-time platform that gives you the highly granular, up-to-the-minute visibility and control you need to identify and correct security and configuration issues on hundreds of thousands of laptops, desktops and servers throughout your the enterprise.

The BES dramatically simplifies:

Configuration Management

Software deployment, real-time inventory, configuration discovery and control, license and usage tracking and reporting

Patch Management

Pre-packaged, pre-tested patch management for Windows, Linux, UNIX and Macintosh

Vulnerability Management

Detection, reporting, and automation-assisted remediation of SANS vulnerabilities, insecure OS configuration, and best practice security policies

Anti-Virus and Personal Firewall Management

Management, distribution, and reporting for leading anti-virus software (including definition updates), and personal firewall software

Spyware Detection and Removal

Detection, reporting, and removal of spyware, malware, trojans, hijack and other non-virus software pests

Asset Discovery

Unmanaged computing asset and network device discovery and reporting

Network Enforcement and Quarantine

Cooperative endpoint assessment and remediation in conjunction with industry leading network enforcement and quarantine technologies

Endpoint Security

Configuration Management

Patch Management

Asset Discovery

Anti-Virus and Personal Firewall Management

Vulnerability Management

BigFix Enterprise Suite 5.0 Platform

Scalable, secure, real-time visibility and automation-assisted control

The BES Platform is the foundation for modular solutions for software deployment, patch management, real-time inventory, vulnerability management, anti-virus client management, spyware detection and removal, policy based network access control, and more.

The screenshot displays the BigFix Enterprise Suite interface. On the left, a tree view shows 'All Actions (2462)' categorized by ID, State, Name, By ID, By State, By Name, By Site, By Issued By, and By Time Issued. A table lists actions with columns for ID, State, and Name. The main window shows a 'BES Network Visualization' of a globe with numerous nodes and connections. On the right, a 'Controls' panel lists properties like Computer Name, OS, CPU, and RAM. Below the network, an 'Analysis Summary' for 'Running Services/Applications' is shown, including a table of running services and their status.

Service Name	Count	Percentage
".NET Connection Service" ".NET Framework Service" "Running"	1	0.04%
"3ComDMIService" "3Com DMI Agent" "Running"	27	0.97%
"6to4" "IPv6 Helper Service" "Running"	3	0.11%
"._IOMEGA_ACTIVE_DISK_SERVICE_" "Iomega Active Disk" "Running"	59	2.11%
"acautoreg" "ActivCard Gold Autoregistor" "Running"	1	0.04%
"Accoca" "ActivCard Gold service" "Running"	1	0.04%
"ACS" "Atheros Configuration Service" "Running"	1	0.04%
"ActionAgent" "ActionAgent" "Running"	497	17.79%
"Adaware" "Adaware" "Running"	1	0.04%
"AFA_AGENT" "PERC2 Remote Services Agent" "Running"	4	0.14%
"Agilent Event Distributor" "Agilent Event Distributor" "Running"	1	0.04%
"Agilent License Server" "Agilent License Server" "Running"	1	0.04%
"Alert Notification Server" "Alert Notification Server" "Running"	1	0.04%

The BES gives you visibility into every computer on the network, as well as which policies, configuration settings, and vulnerabilities apply to each laptop, desktop or server running a BigFix Agent—regardless of location or operating system. And it gives you precise control to fix them—when, and how you want to—while enabling you to monitor the progress of your fixes in real time.

Real-time visibility and control of configuration, software, and vulnerabilities—never miss a service level commitment again

Now, you can make decisions based on the current state of computers throughout your network—and then deploy software, modify configurations, or apply patches to one or a hundred thousand computers, on your schedule—in seconds or minutes versus hours and days.

Gain better control and ensure regulatory compliance of your enterprise with a real-time view of computer configuration, software and hardware inventory, license tracking, and software usage.

With BES, you can retrieve and report on almost any properties of the hardware, software, or operating environment from one or from a hundred thousand computers in minutes.

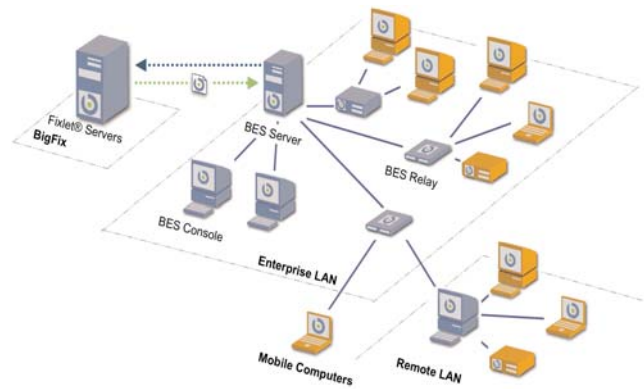
Produce ad-hoc reports, make configuration changes, apply patches, or upgrade software on any computer or subset of computers on the fly (with immediate confirmation that the change succeeded or failed—including a detailed view of all the steps taken). Achieve a new level of efficiency and performance with the real-time BES platform, and never miss a service level commitment again.

A unified view of all your far-flung computing assets

The BES easily spans multiple geographic locations and distributed networks to provide you with a single unified view of your enterprise. You are assured of the most current view of computers (even those that intermittently connect to the network), as well as central oversight and control of all your laptops, desktops, and servers. And, if you choose, you can delegate administration based on your existing hierarchies or groupings you define on-the-fly (virtually any property of the hardware, software, or operating environment of your computers can be used to group and to partition administrative rights).

Easy to deploy and easy to use

BigFix's multiplatform solution leverages your existing IT investments to provide a core set of built-in, high-speed, high-efficiency capabilities that unify and dramatically simplify management of your mobile laptops, desktops, and servers—including configuration management, inventory discovery and asset tracking, software distribution and provisioning, and software license and usage tracking. Most BigFix customers leverage the infrastructure they already have—file servers, desktop computers in remote offices, and other existing computing assets, to deploy BES—simplifying deployment, and achieving significant savings in hardware, software, and personnel costs over other solutions.



The BigFix Enterprise Suite (BES) architecture scales to hundreds of thousands of computers throughout the enterprise.

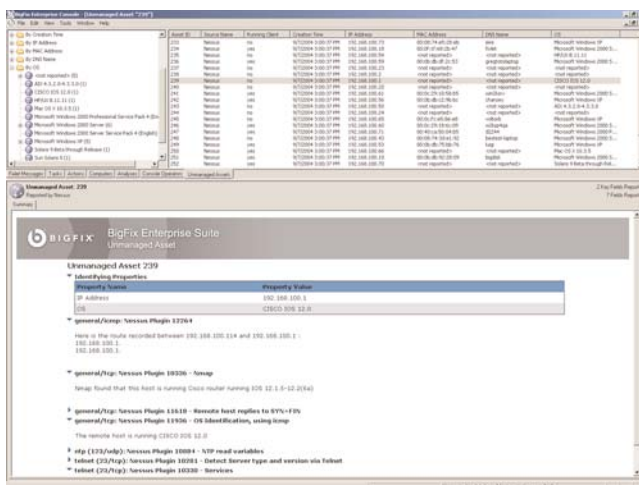
The scalability required for global enterprises

With BigFix, you can manage a hundred thousand computers from a single BES server. Once deployed, the BigFix Agents work continuously to keep administrators up to date on the properties and configuration of every computer, and to monitor for any new patches, vulnerabilities, or deviations from your configuration policies. When administrators authorize new actions, the agent makes the appropriate change, installing the specified software or patches, or applying the new policy—all with minimal network impact.

BigFix adapts to your network—thousands of locations, intermittent connectivity, and low bandwidth are no problem. And you can use the powerful, policy-based configuration control capabilities of the BES to automatically manage bandwidth usage based on the type of network connection, subnet, time of day, or any other properties that you define.

Industrial-strength security that lets you live without fear

Strong security is built into the BES from the ground-up. All content (including deployed software and patches), are verified with a secure hash algorithm to ensure authenticity. In addition, the BES uses Public Key Infrastructure and RSA algorithms to digitally sign all actions and ensure that no unauthorized administrator or malicious intruder can hijack the BES to take actions on computers in your network. In short: No other solution is as simple, powerful, or as secure as the BES.



The BES integrates unmanaged computers and network asset discovery and vulnerability information into the BES Console.

The flexibility to meet all your needs – today and for the long term

Once the BigFix Enterprise Suite is deployed, you can enhance your BigFix solution with a host of add-on capabilities to fit specific configuration management or security requirements. Or extend the solution yourself with the powerful automation-assistance tools in the BES. It is simple to create customized configuration, policy enforcement, provisioning, PC health, vulnerability remediation and other solutions – on your terms and on your schedule. No other solution provides the automation-assisted speed and control of the BES. In fact, no other solution comes close.

The BES platform provides flexible and customizable real-time reporting on hardware or software inventory, progress on remediating a security and other issues, the change history of your computers, and much more. The BES platform provides a powerful tool for managing your extended enterprise, no matter where your enterprise extends.

Platform system requirements

BES Server

Windows 2000 Server or Windows 2003 Server
Compatible with SQL Server 2000/MSDE 2000

BES Console

Windows 2000/XP

BES Client

Windows 95/98/ME/NT4+/2000/XP/Server 2003
Standard Edition

SUN® Solaris™

Red Hat® Linux

Red Hat Enterprise Linux

Fedora Linux

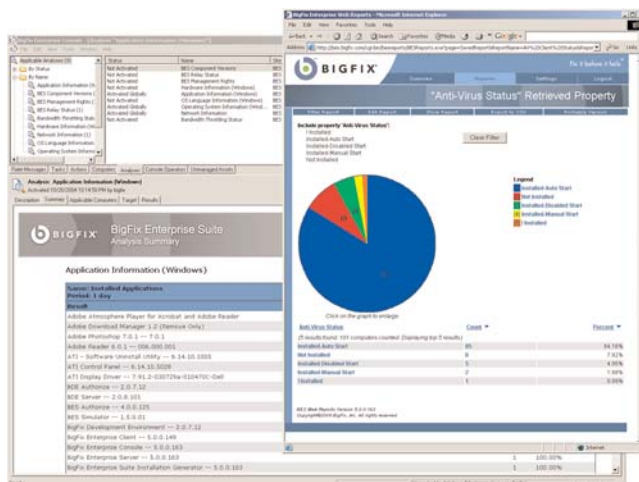
SUSE Linux

Hewlett-Packard® HP-UX™

IBM® AIX

Macintosh OS X®

Note: Call for latest list and versions of supported platforms



The BES Web Reports provides you with up-to-the-minute status of your security and configuration posture.



BigFix, Inc.
6121 Hollis Street
Emeryville, CA 94608
T 510.652.6700
F 510.652.6742
E info@bigfix.com