

# BES Patch Management



Bringing control, speed and simplicity to multi-platform enterprise patch management

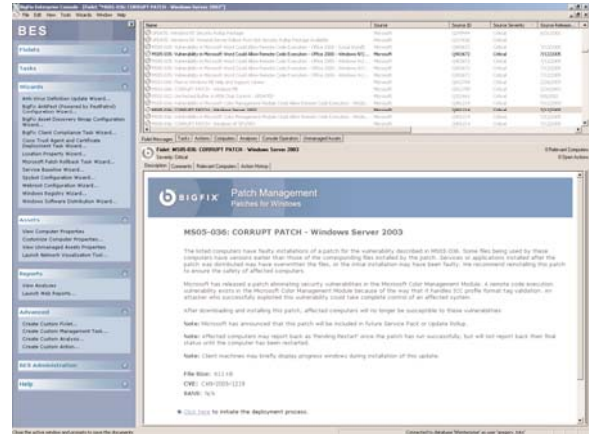
## Enterprise patch management made surprisingly easy, automated, sane – and lightning fast.

With the increasing pace of security exploits, and today's complex and distributed enterprise computing environments, manually identifying, prioritizing, packaging, testing, deploying, and verifying security patches and updates across tens of thousands of server, desktop, and laptop computers has become simply too time-consuming, error-prone and expensive.

## Real-time, multi-platform patch management

Built upon the scalable, secure, agent-based BigFix Enterprise Suite (BES) Platform, the BES Patch Management solution gives network administrators a flexible, easy-to-use tool that:

- Proactively detects vulnerabilities in real-time (seconds and minutes), on Windows, Unix, Linux, and OS X computers in global, multi-platform networks
- Fundamentally reduces the time-scale and effort required to patch servers, desktops and laptops
- Provides detailed information to set priorities and to make educated decisions about remediation
- Enables administrators to meet aggressive service levels with lightning fast remediation, and immediate verification
- Continuously monitors servers, desktops and laptops for vulnerabilities and can fix them even if they are not connected to the enterprise network
- Eliminates vulnerabilities quickly and simply with pre-packaged, pre-tested patches:
  - Microsoft OS and application patch coverage for English OSES and applications
  - Patch coverage for Microsoft non-English OSES
  - Security and OS patch coverage for SUN Solaris, IBM AIX, HP-UX, Linux, and Macintosh OS X
  - Corrupt patch detection and remediation
  - Patch roll-back for patches that support uninstall
- Supports mobile and remote computers with bandwidth limitation and download restart capabilities
- Provides a full audit trail of patching actions and patching steps taken on every computer
- Supports flexible administrator defined test groups and test deployment of patches prior to production roll-out



*The BES Console gives you visibility into every computer on the network, which vulnerabilities apply to them, and full control of the actions to fix them – in real time – in seconds and minutes v. hours and days.*

Best of all: BES Patch Management leverages the power of the BES Platform so there's no complex installation. No new scripting. No training. No added hardware. New security capabilities can be up and running in a matter of moments.

## Control and visibility to keep you ahead of vulnerabilities

Patch Management Fixlet® messages provide the "intelligence" to identify a vulnerability, a description of the issue (with links to additional background information for the administrator), and the automated actions to access and apply the patch in a pre-assembled, pre-tested package.

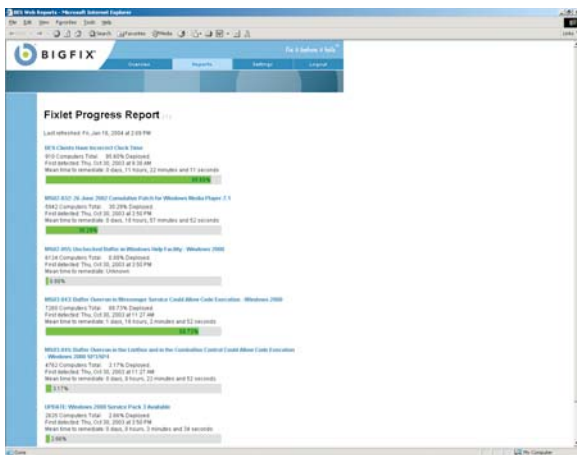
This allows an administrator to identify vulnerabilities and issues enterprise-wide in real time, understand and prioritize issues, and deploy pre-tested remediation for tens of thousands of computers simply and efficiently from BigFix's administrative console, which is so easy to use, it won the Best "Ease of Use" Award from Information Security.

## Lightning-fast speed for the ultimate in instant gratification

With BES Patch Management, you can watch a fix happen, as it happens, across the entire enterprise. Now, you have real-time identification of vulnerabilities and configuration issues on computers enterprise-wide. Not to mention real-time verification of the success or failure of the remediation on computers enterprise-wide.

### Real-time reporting so you always know where you stand.

Sophisticated, Web-based reporting offers dashboard summary reports and progress reports of at-a-glance enterprise vulnerability status and remediation history (and trends) for management. With BES Patch Management, vulnerabilities are resolved. On your terms. In real time.



BES Web Reports shows you the status of your fixes, enterprise-wide – as they happen.

### Pre-tested, ready to deploy, easy to use

The BES Patch Management solution's library of patches come pre-tested, pre-proven and pre-packaged to enable fast and easy identification and remediation. Patches are available for the following platforms.

#### Microsoft Windows 95 through 2003 (English OS)

Full coverage of Microsoft Security Bulletins, and Microsoft TechNet and Windows Corporate Update service packs, OS updates, hot-fixes, and application patches including: IE 5.0+, IIS 4+; Media Player; JVM; XML Core Services 2.6+; Frontpage 97+; FrontPage Server Extensions; Exchange 5.0+; SQL 7.0+; ISA Server 2000 Site Server; Commerce Server; Content Management Server; Back Office 4.0; Project 2000+; MS Office 2000+; Outlook 2000+; Outlook Express 5.0+

Microsoft Windows NT, 2000, Server 2003, XP  
German, French, Japanese, Italian, Polish, Spanish,  
Brazilian Portuguese, Czech, Simplified Chinese, Korean,  
Hungarian, Turkish, Traditional Chinese  
Coverage varies by OS language. Call for current  
language support

#### SUN Solaris, HP-UX, IBM AIX

Major patch updates. Coverage varies by platform

#### Red Hat Linux, Red Hat Enterprise Linux, Fedora Linux, Suse Linux

Errata and major patch updates. Coverage varies by OS version and kernel

#### Macintosh OS X

OS security updates for OX 10.2 forward

*Note: Call for latest platform support and patch inventory.*

### Customer authored patches or BigFix professional services

Create your own custom patch content using the integrated authoring tools available in the BES Platform for developing custom Fixlet messages for patch management based on your specific security and configuration requirements. Or, BigFix Professional Services is on hand to help implement patches to your specific security requirements. Contact your sales representative for more information.

### Patch Management Awards

2005 SIIA Codie Awards, "Best Security Product"

2004 Information Security Magazine, "Patch Management Product of the Year"

2004 SC Magazine, "Best New Security Solution"

2003 Information Security Magazine, "Best Products: Best Ease of Use" and "Hot Pick"



BigFix, Inc.  
6121 Hollis Street  
Emeryville, CA 94608  
T 510.652.6700  
F 510.652.6742  
E info@bigfix.com